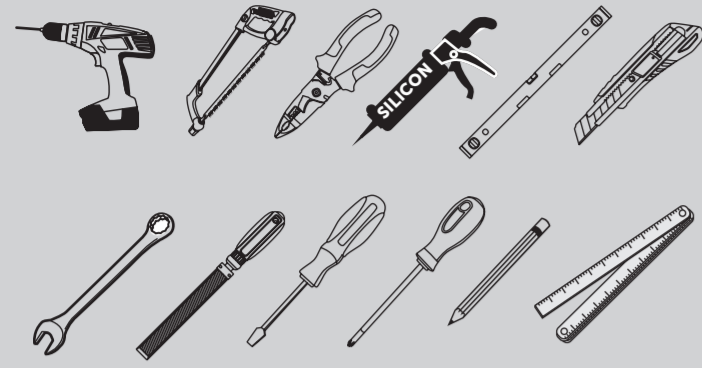
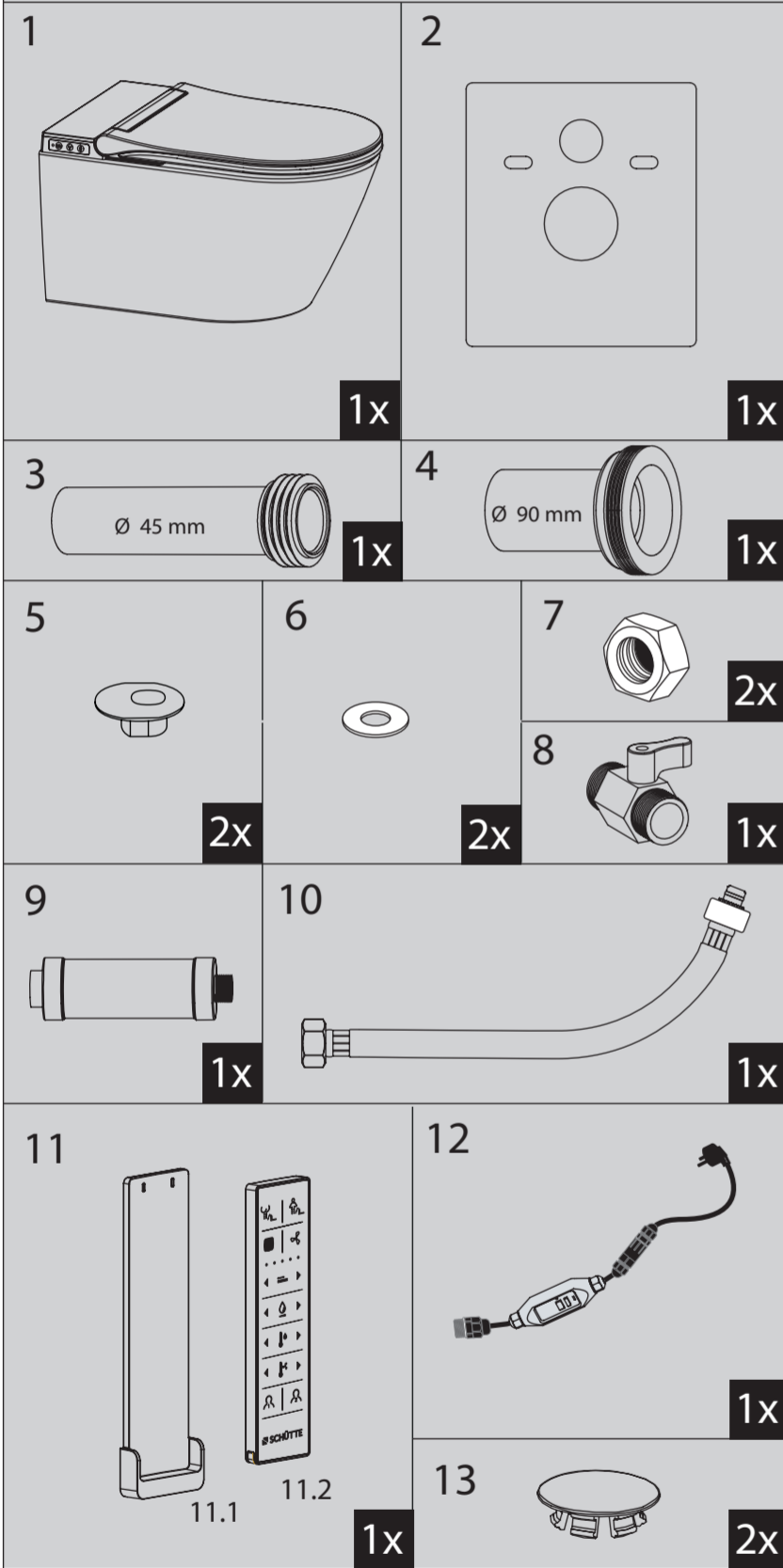


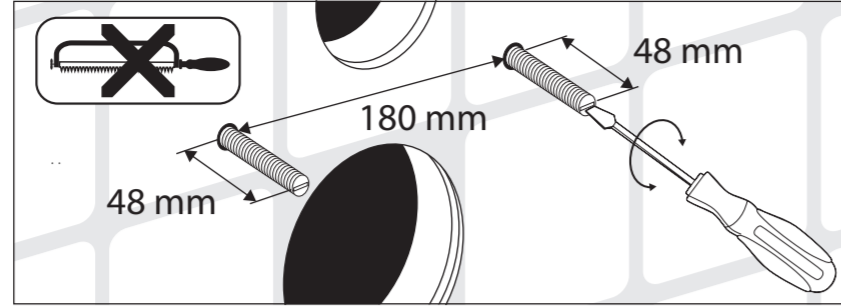
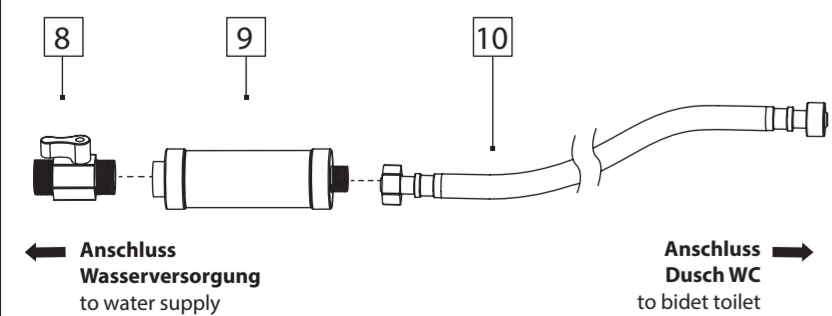
BENÖTIGTES WERKZEUG
TOOLS REQUIRED



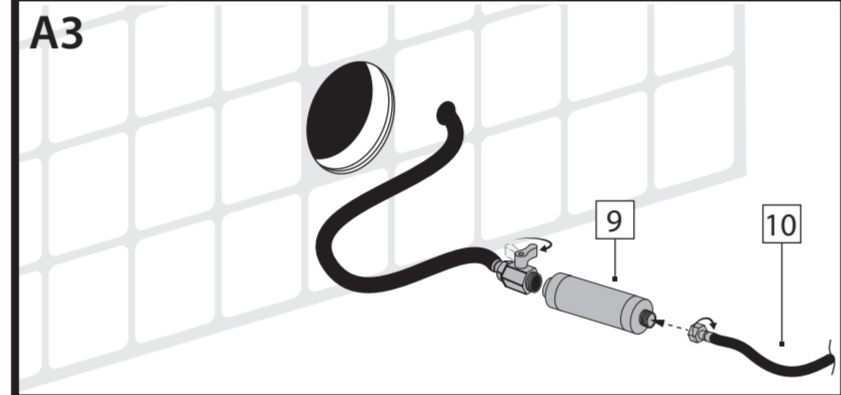
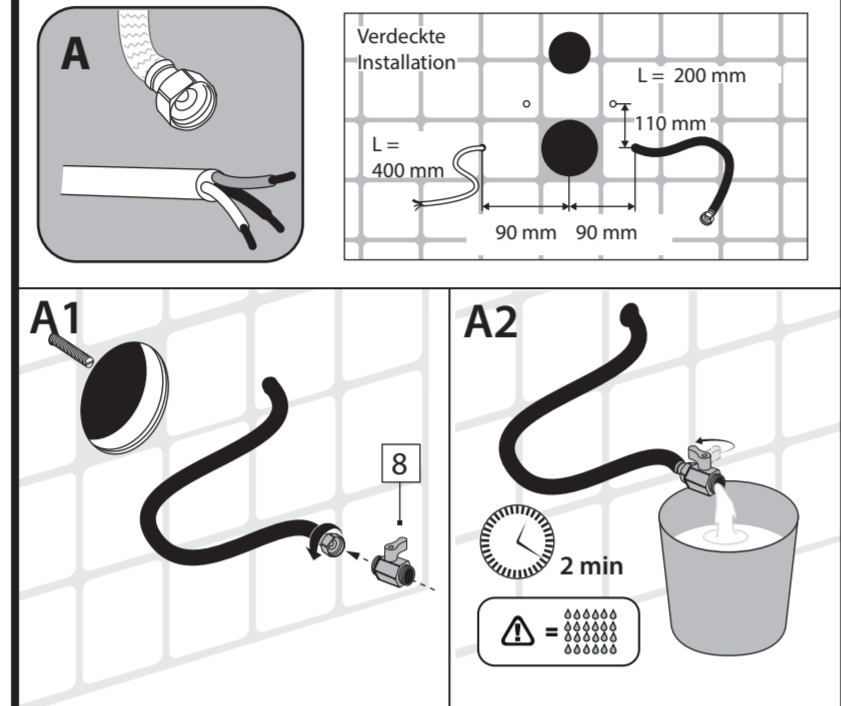
LIEFERUMFANG
SCOPE OF DELIVERY



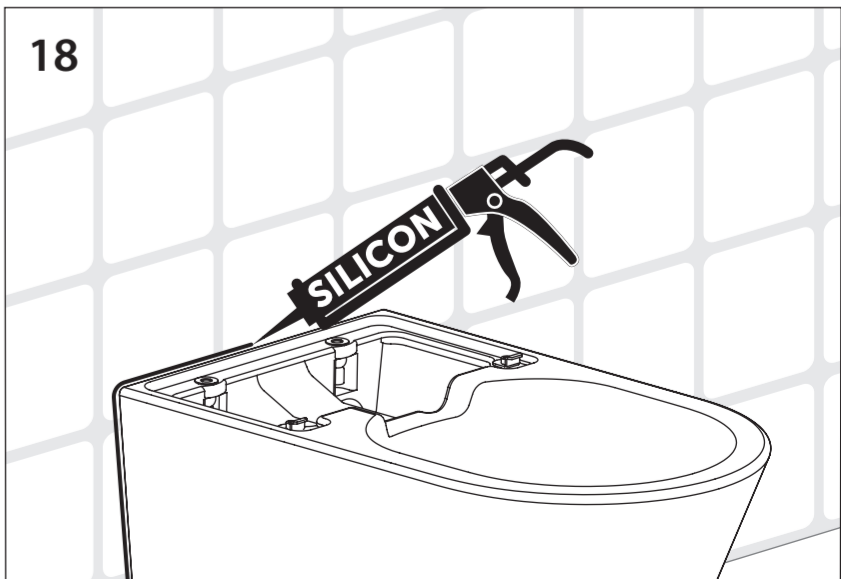
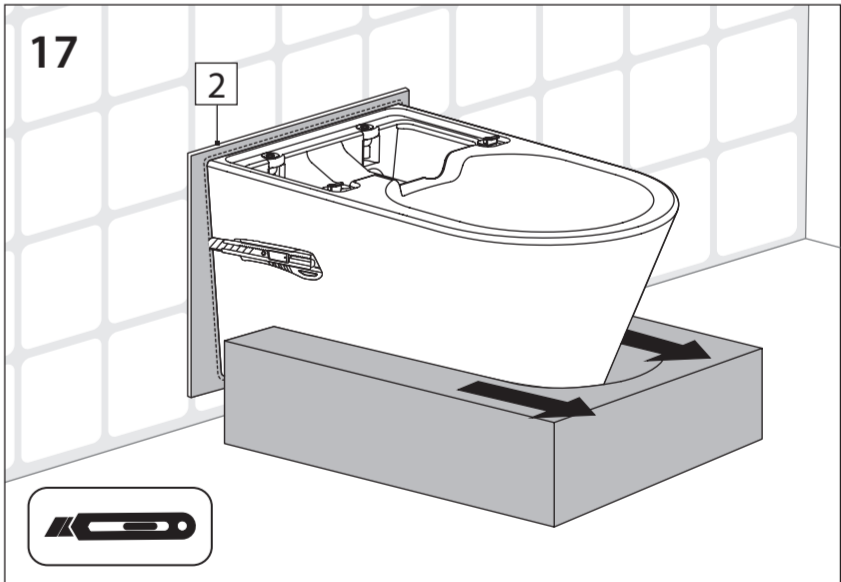
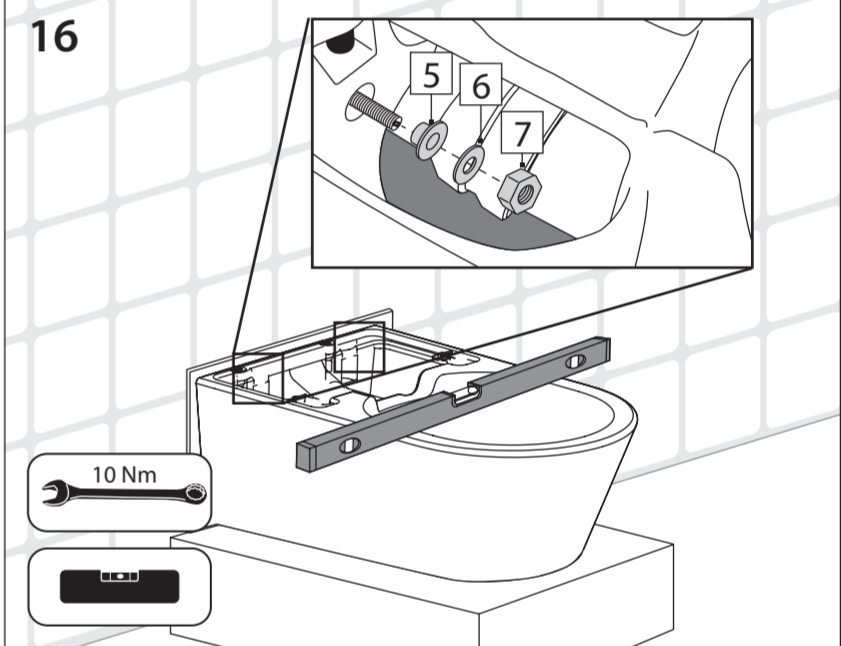
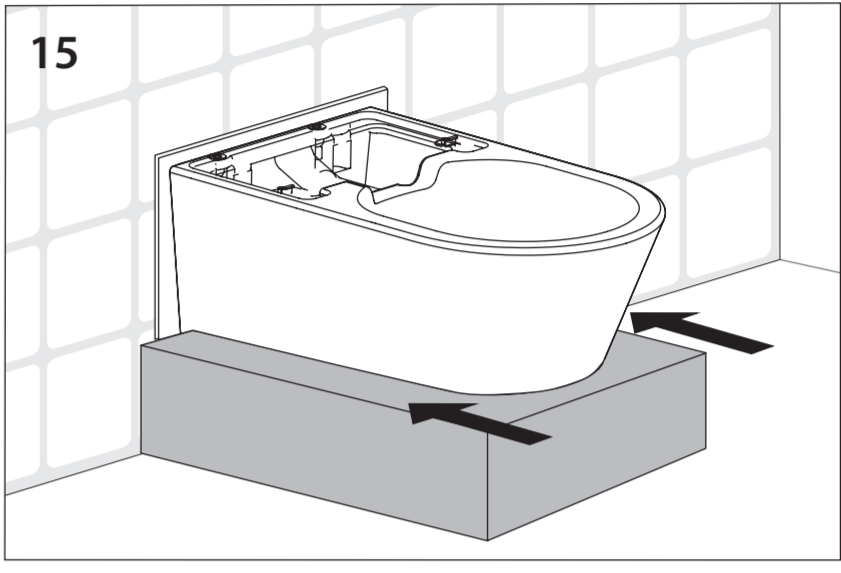
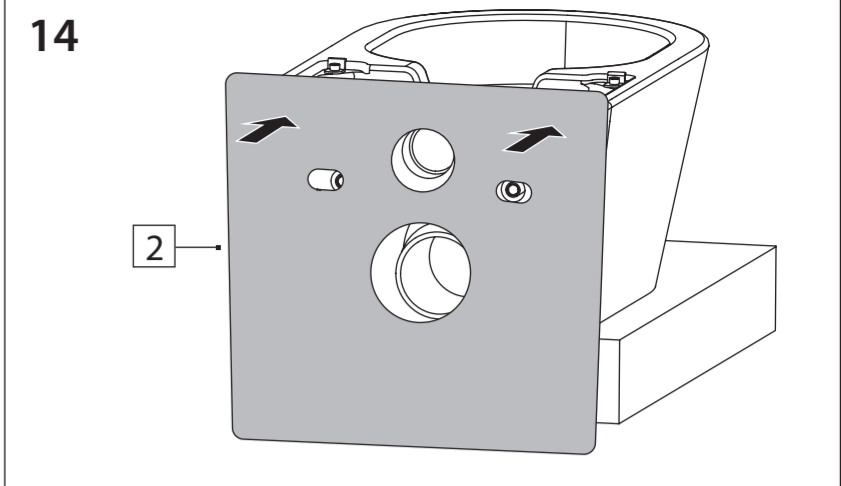
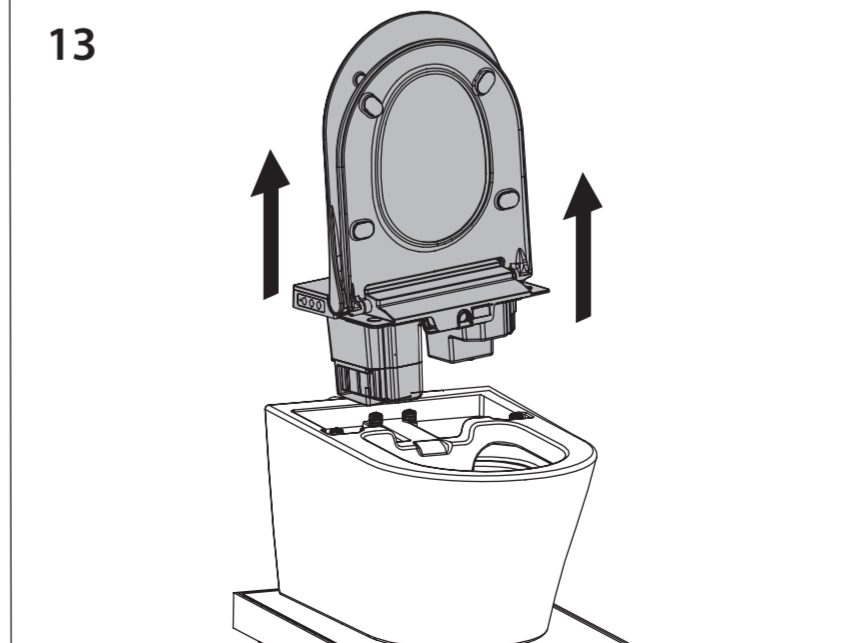
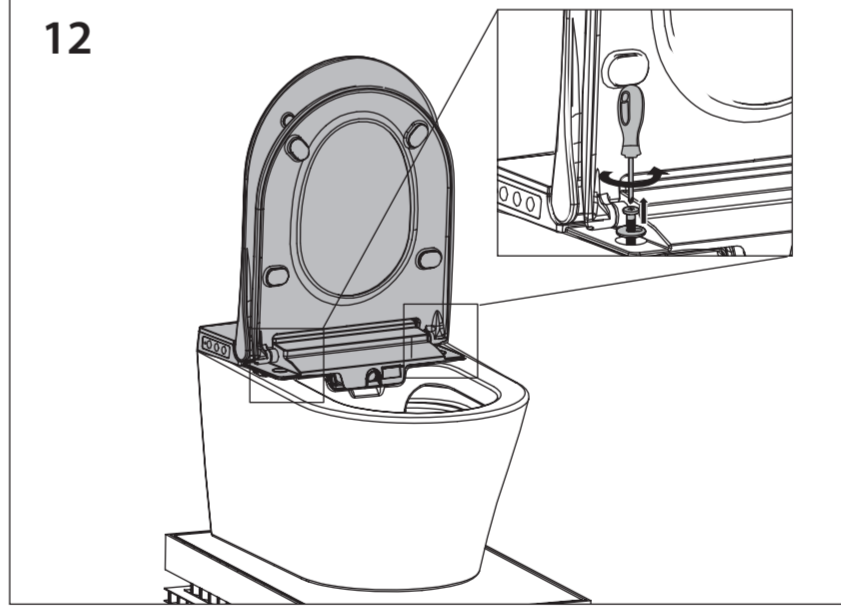
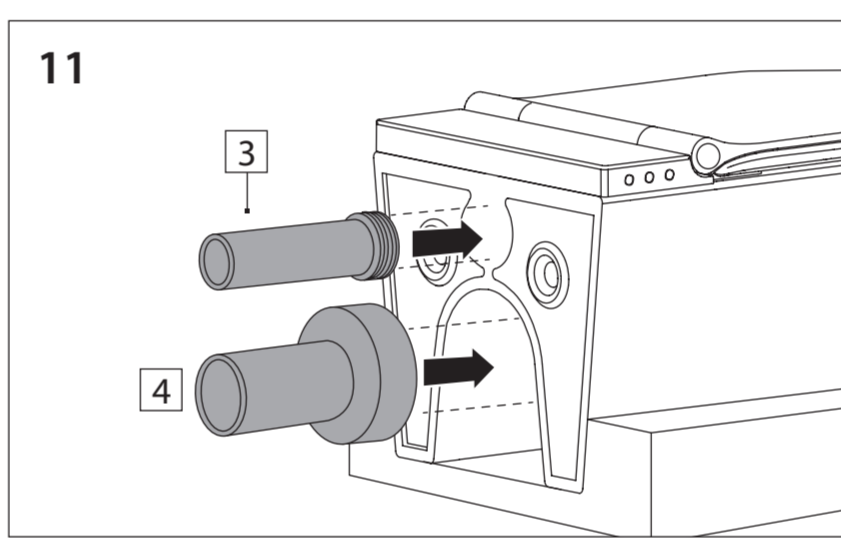
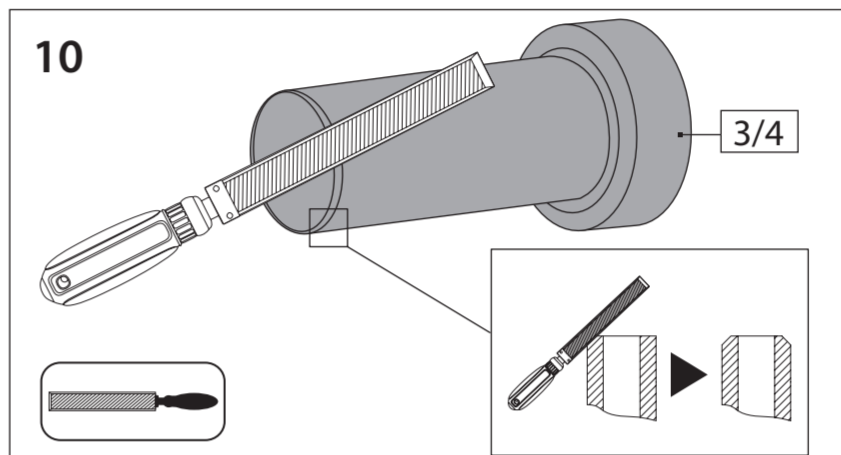
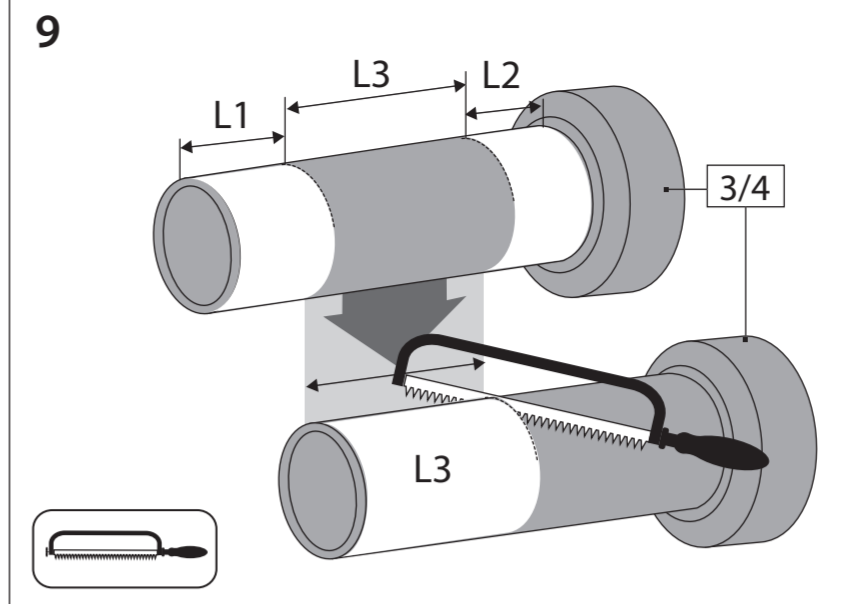
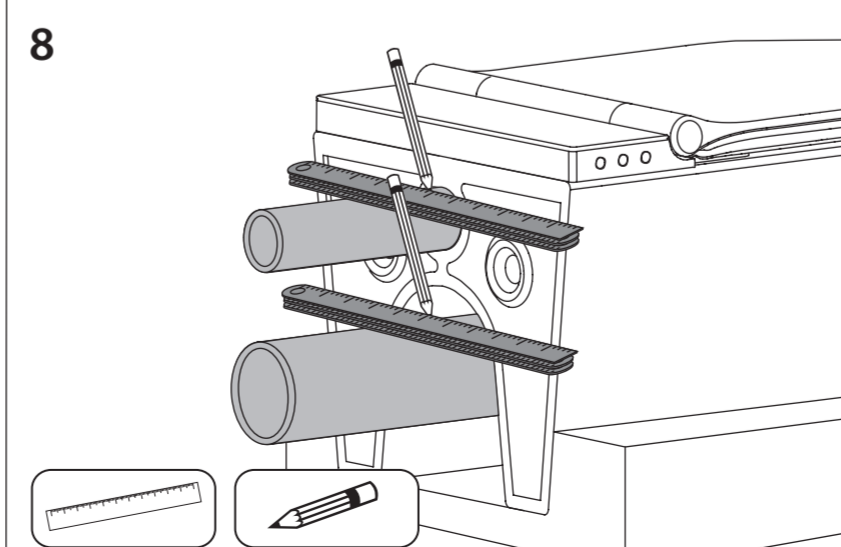
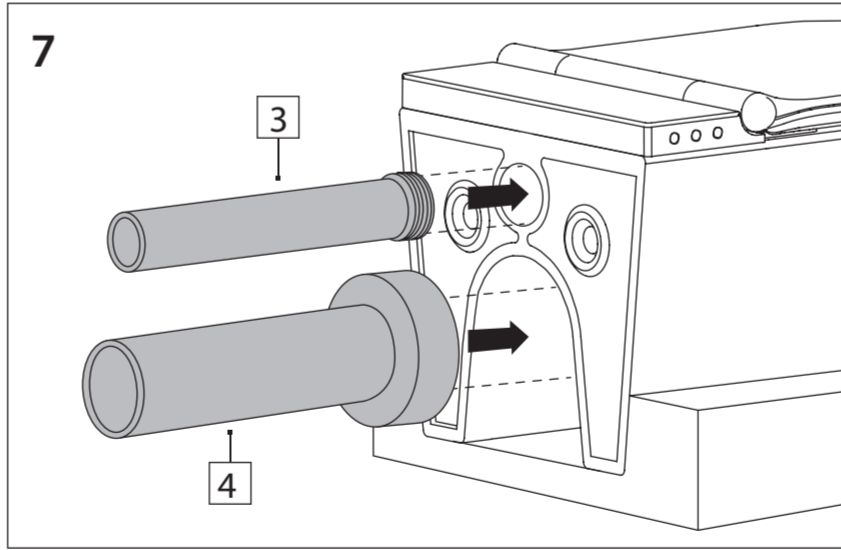
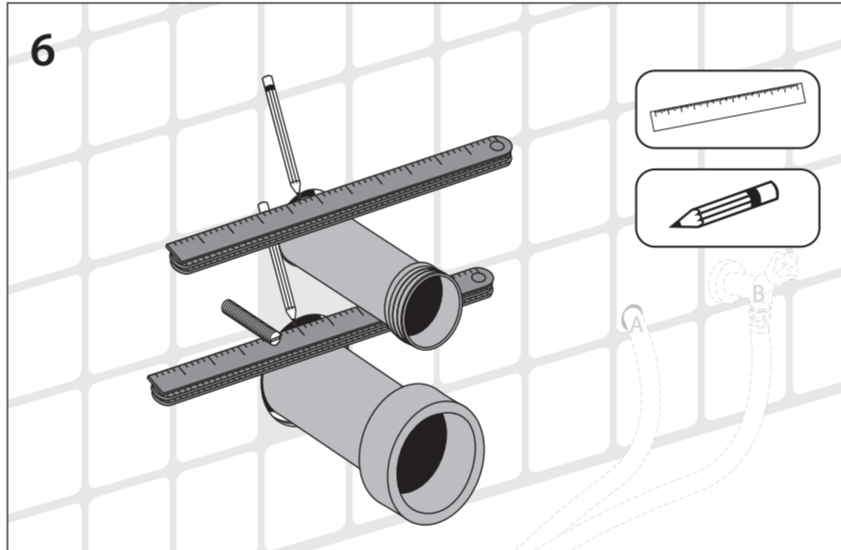
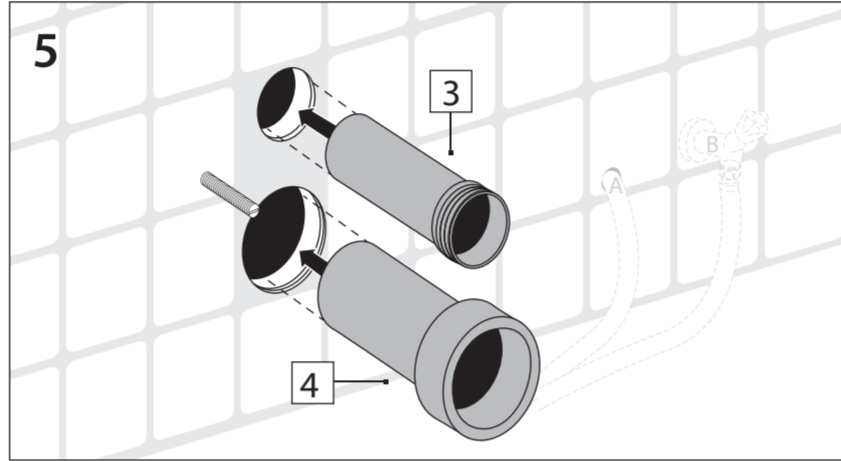
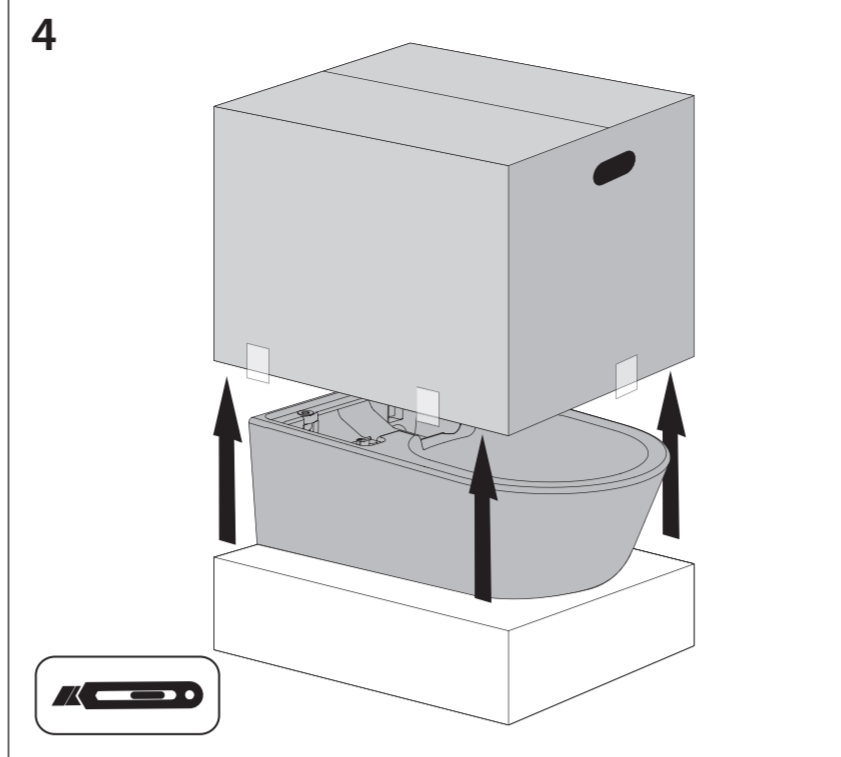
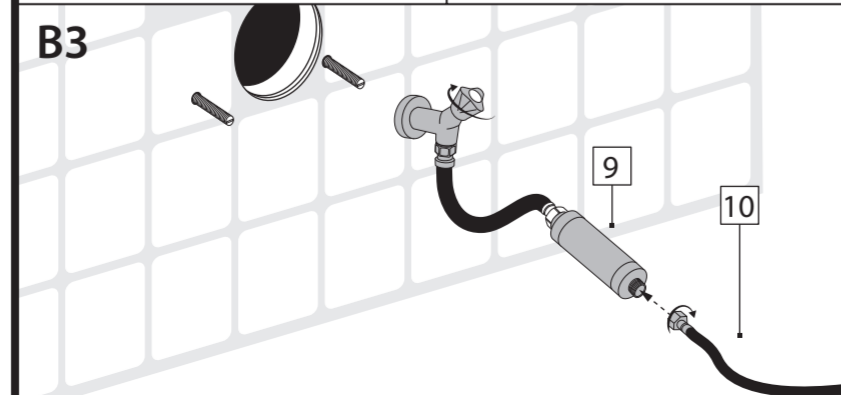
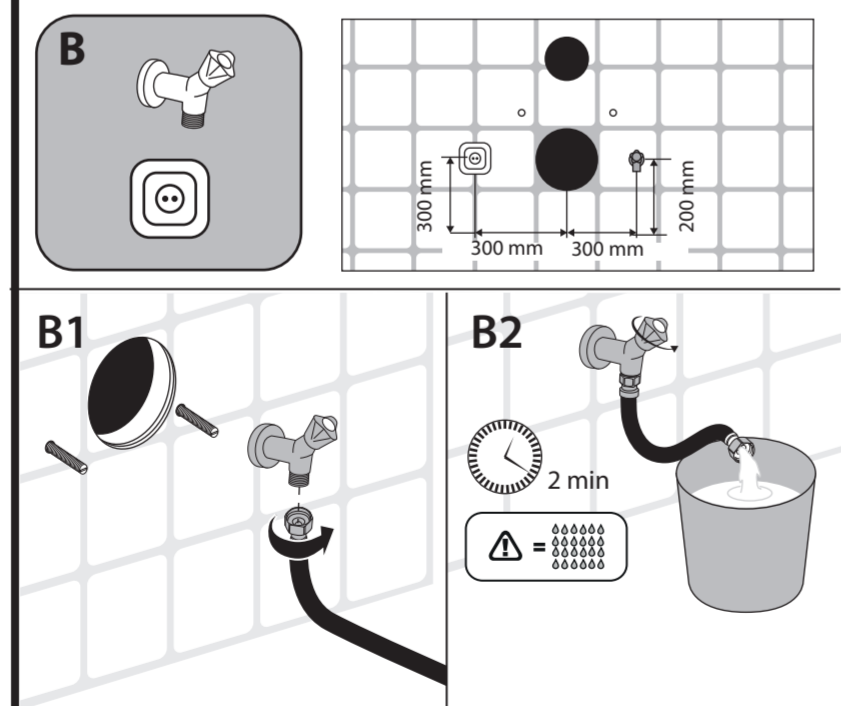
FILTER INSTALLATION
FILTER INSTALLATION



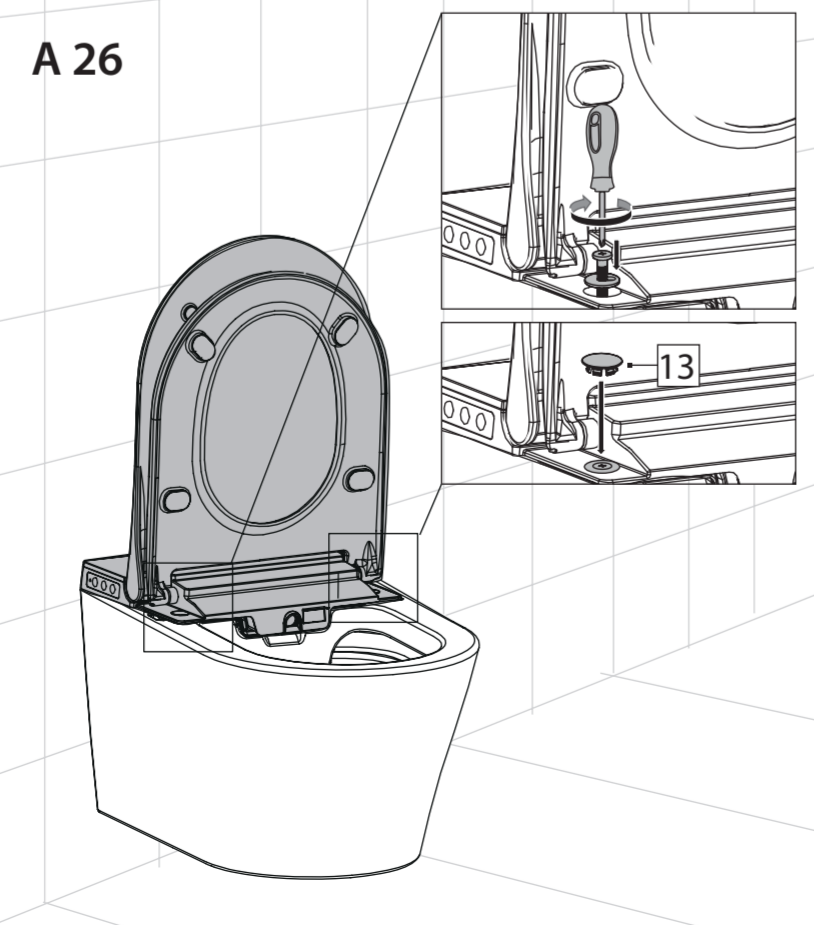
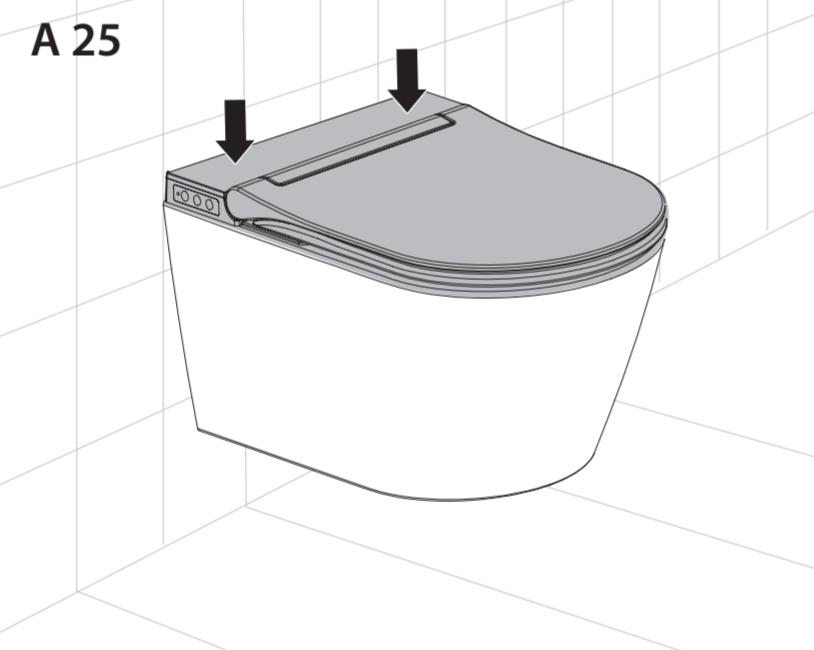
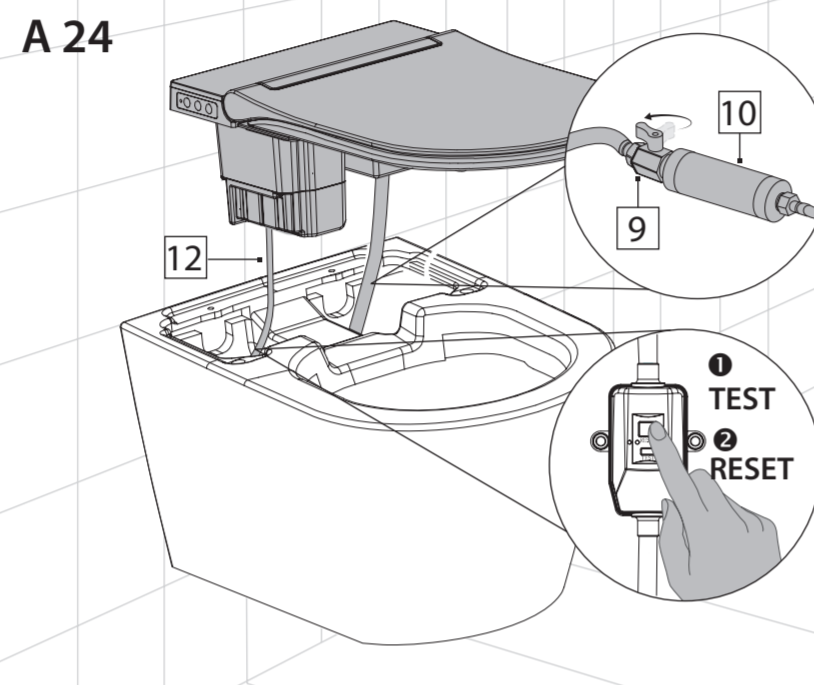
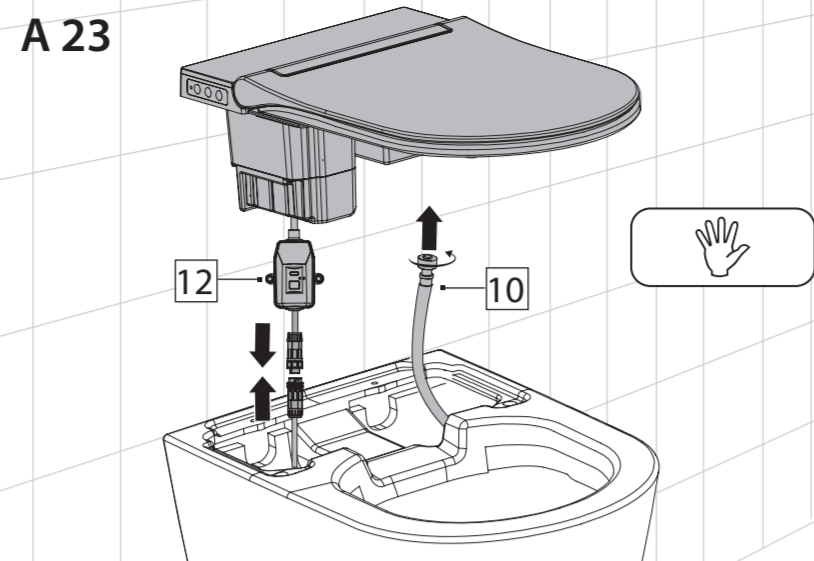
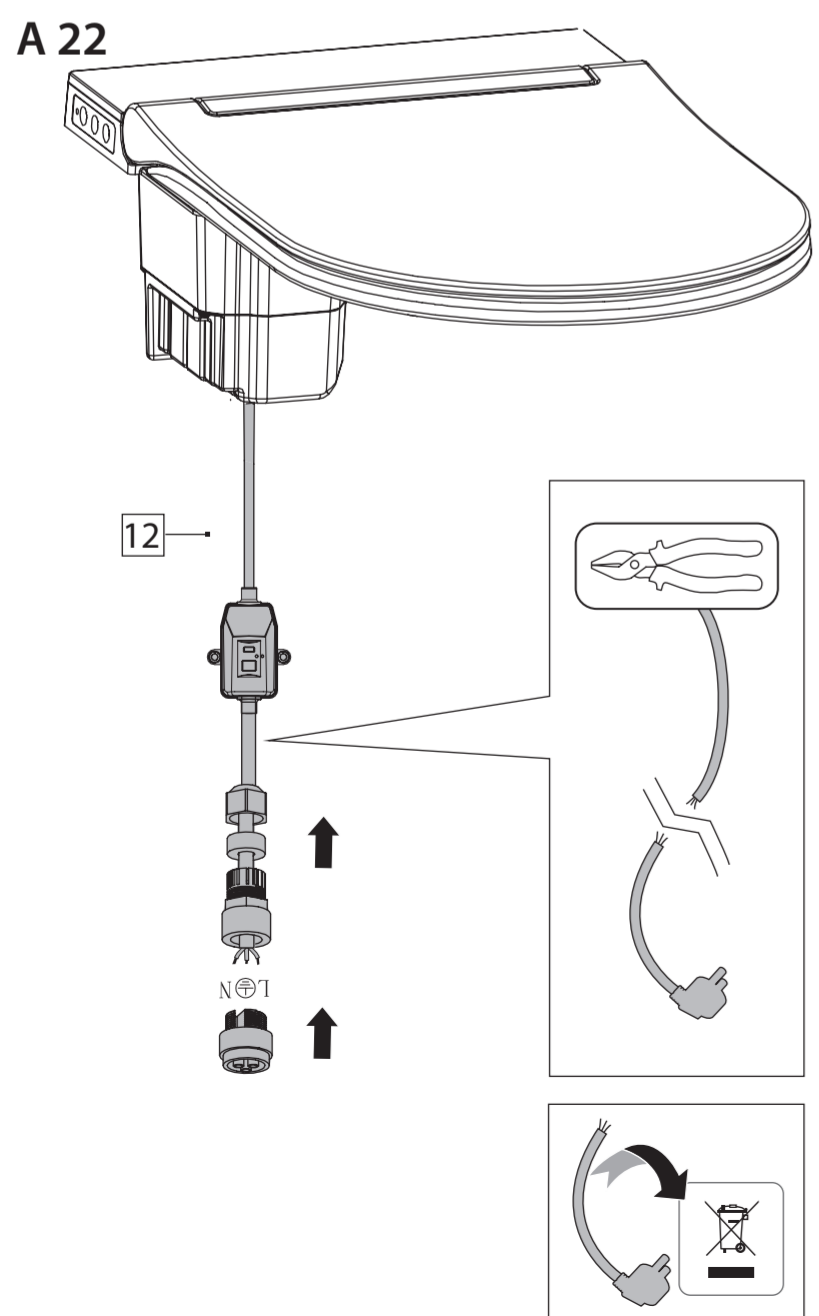
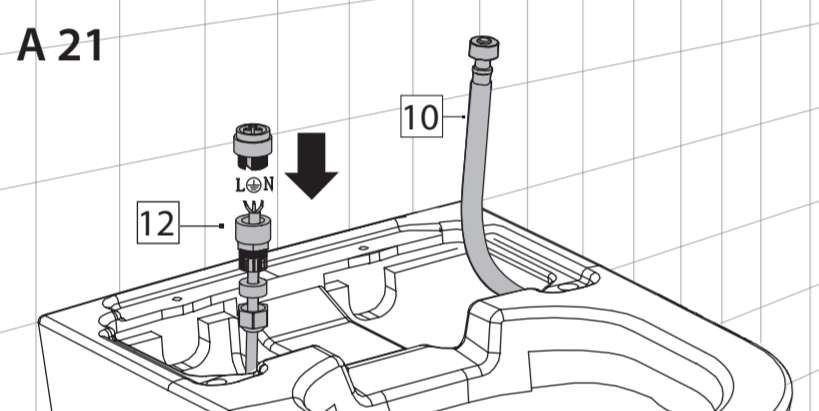
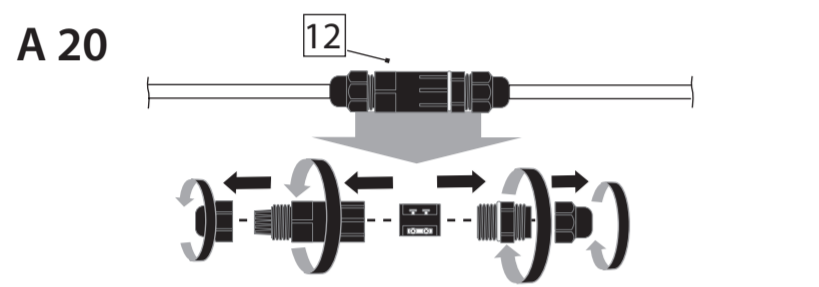
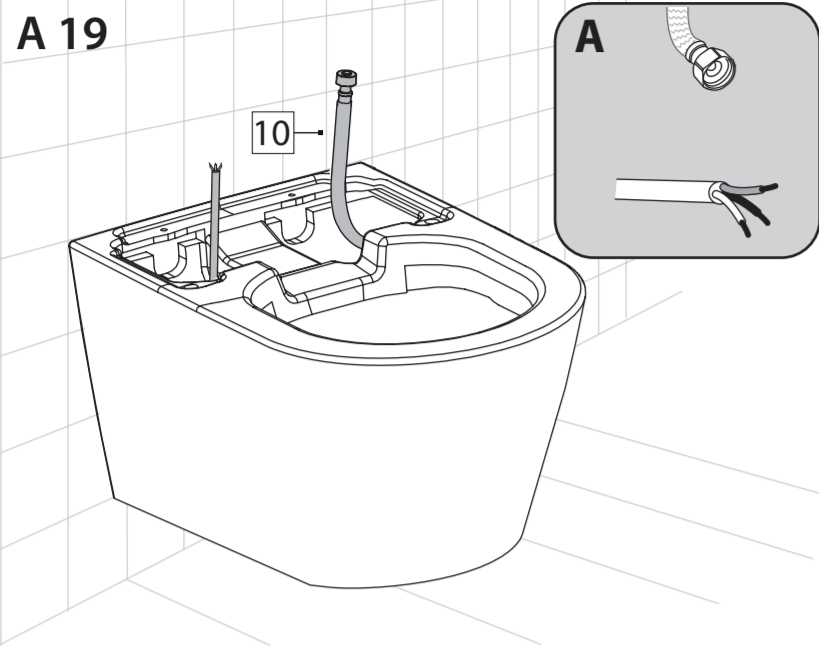
A INSTALLATIONS MODUS
INSTALLATION MODE



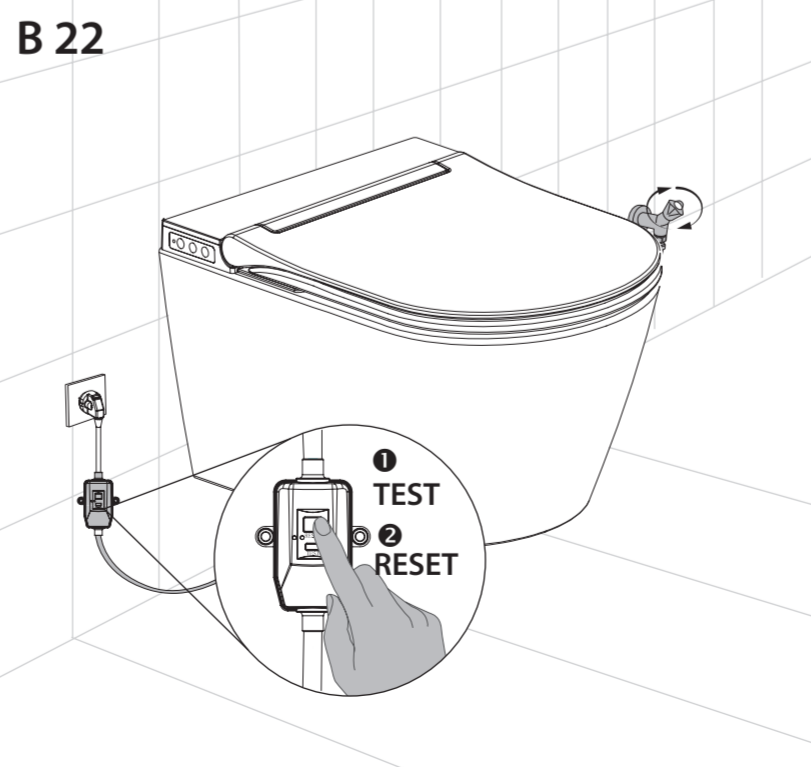
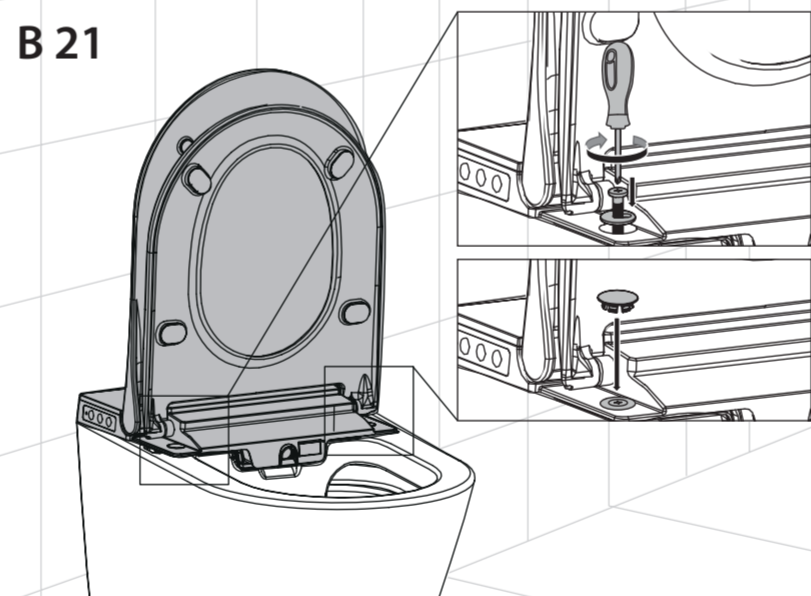
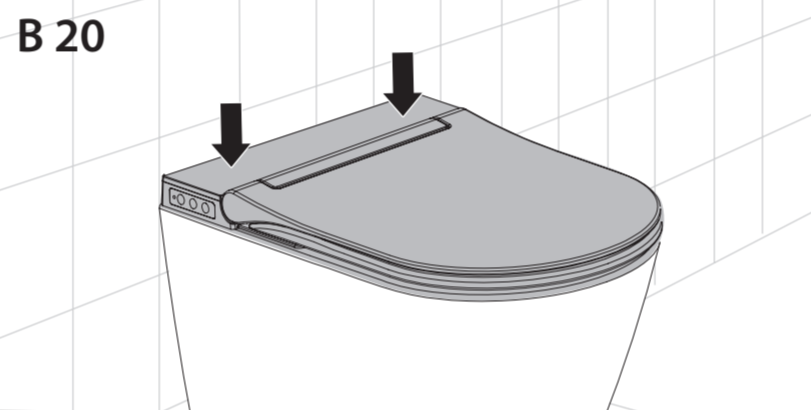
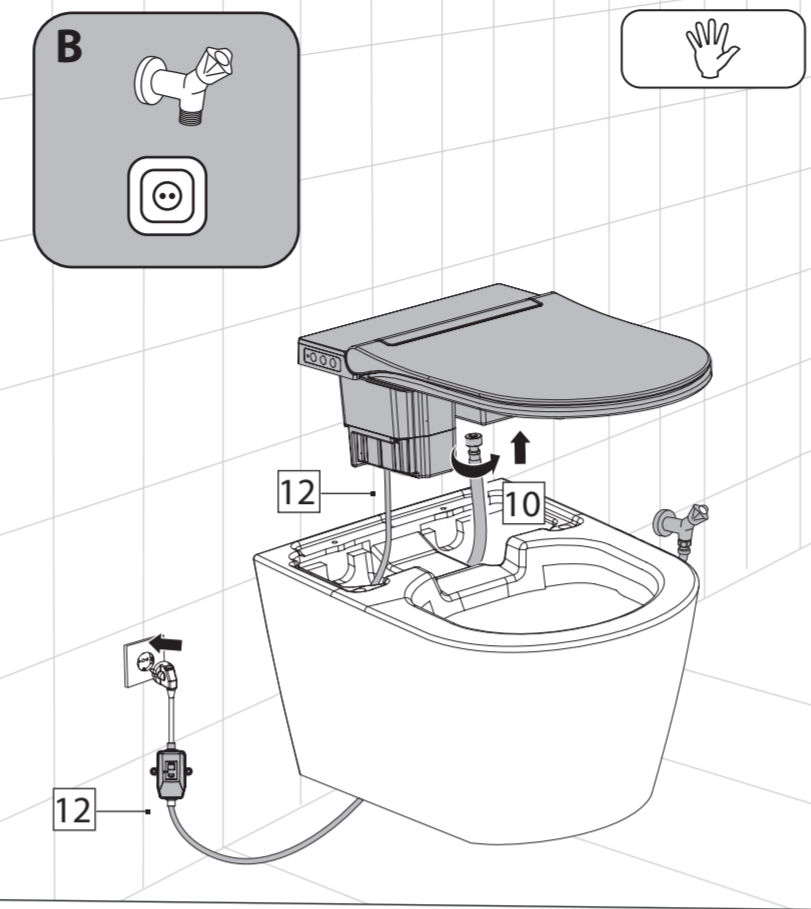
B INSTALLATIONS MODUS
INSTALLATION MODE



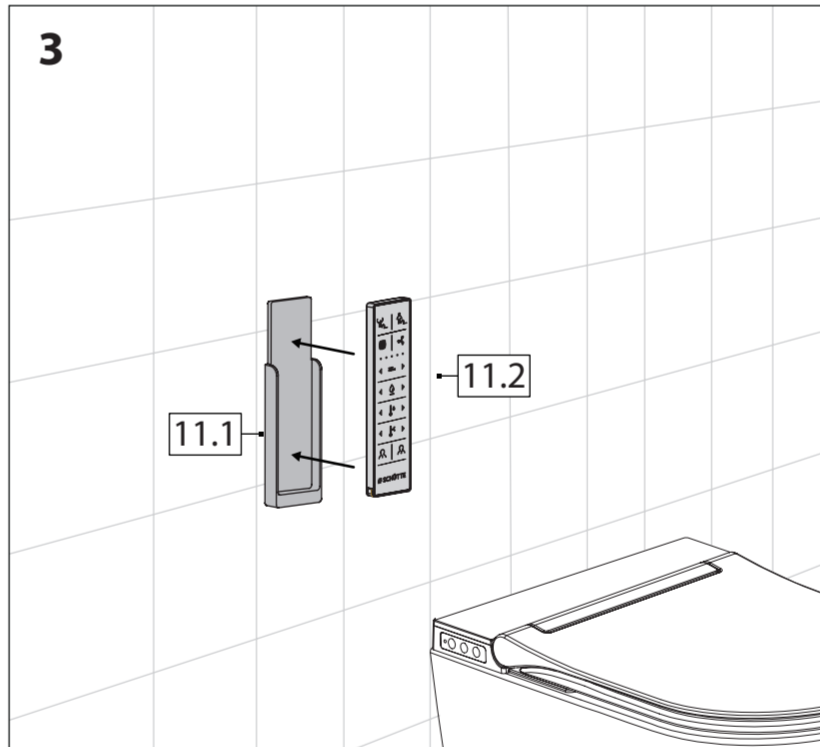
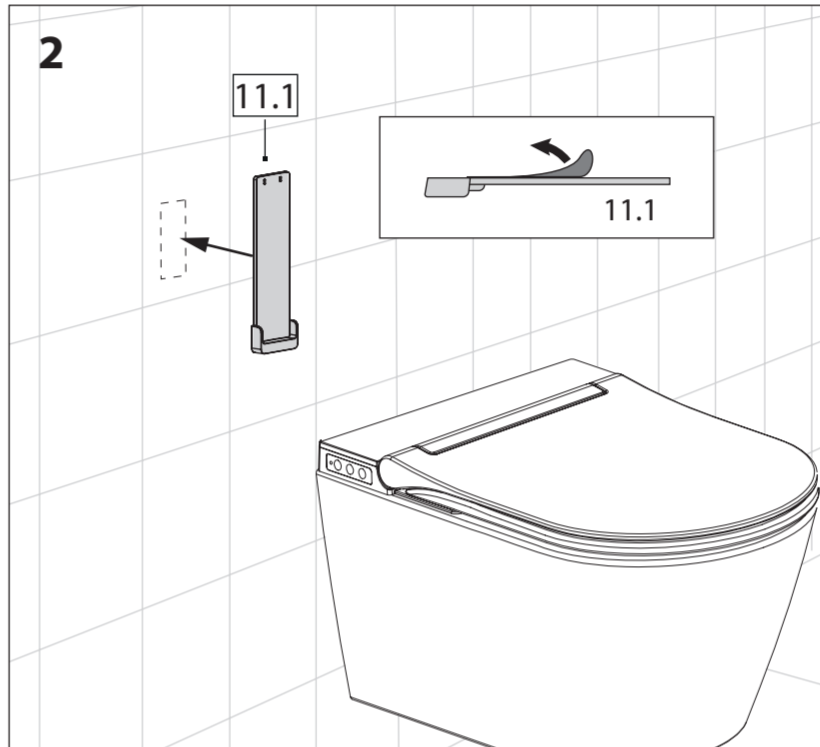
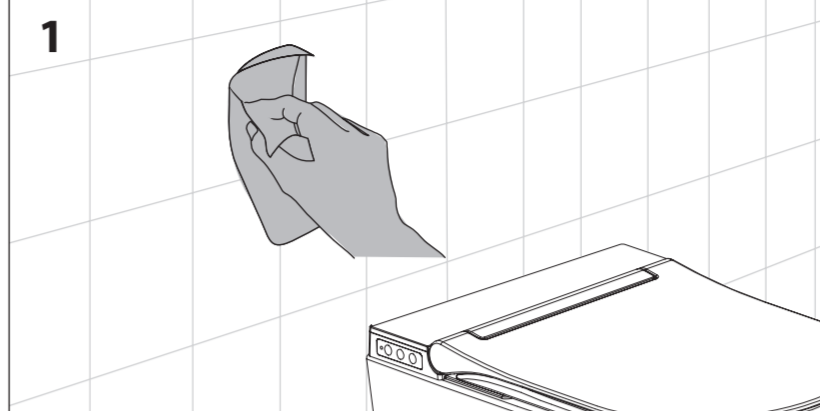
A INSTALLATIONS MODUS INSTALLATION MODE



B INSTALLATIONS MODUS INSTALLATION MODE



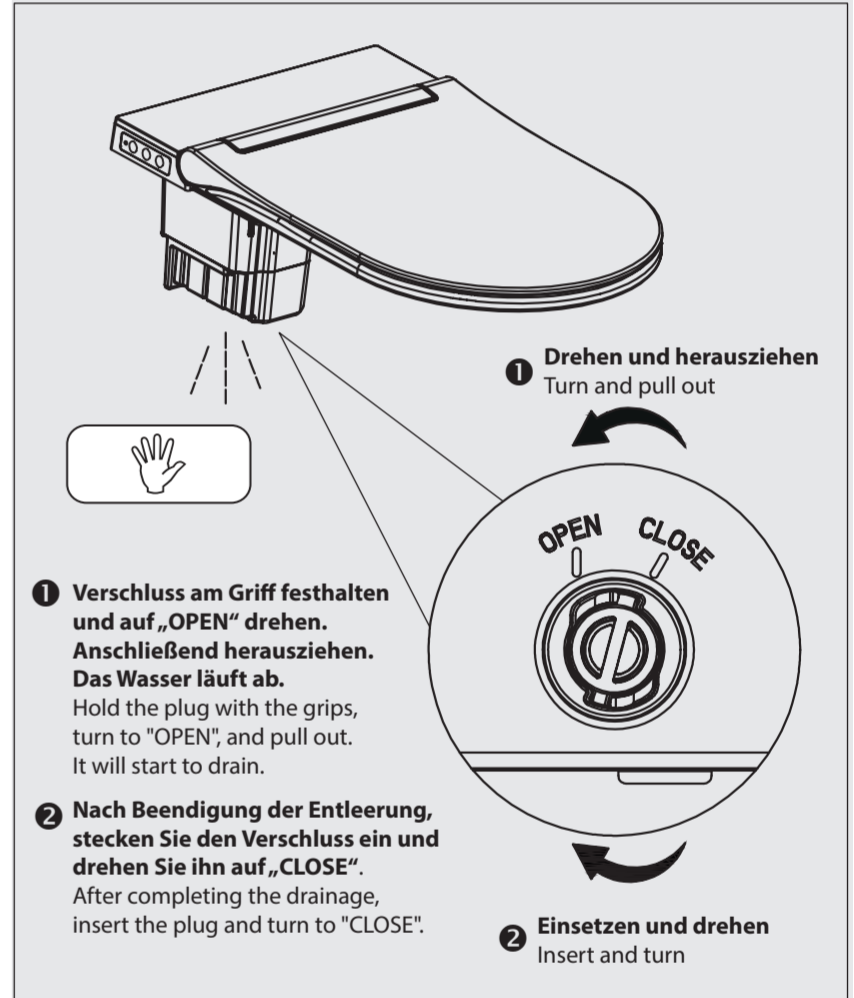
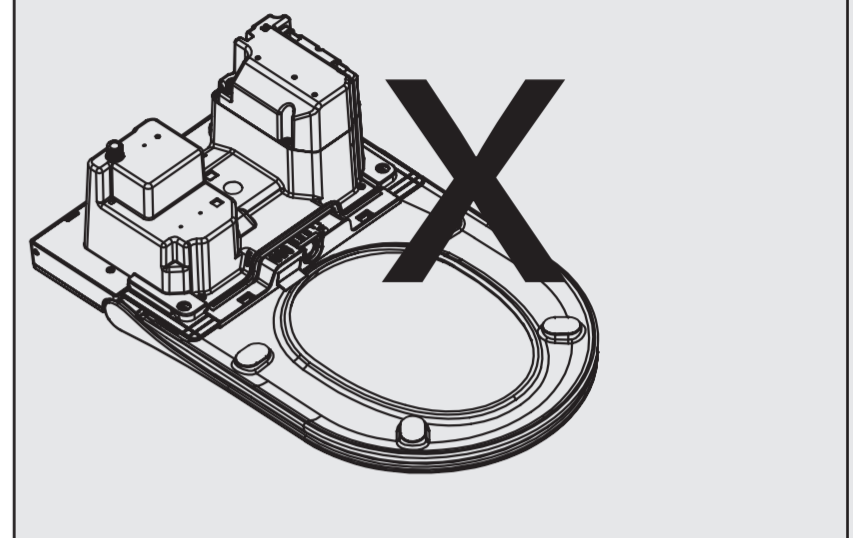
INSTALLATION FERNBEDIENUNG INSTALLATION REMOTE CONTROL



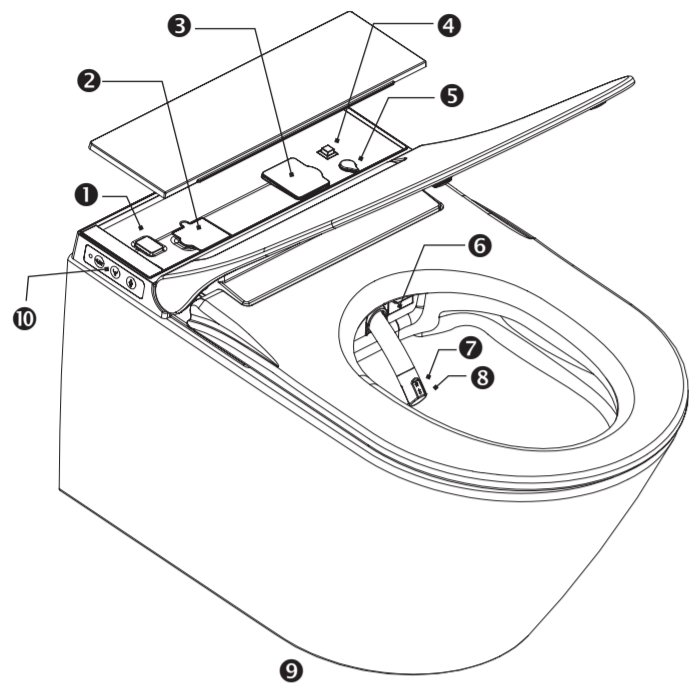
WASSERTANK ENTLEREEN DRAIN THE WATERTANK



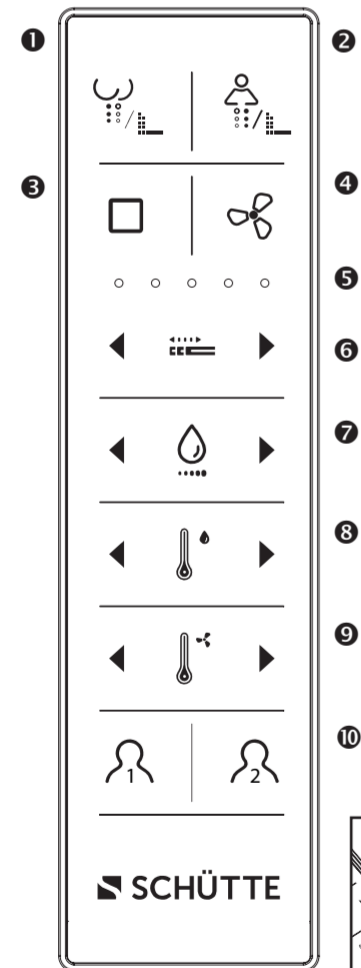
Vor Demontage der Technikeinheit muss das Wasser vollständig abgelassen werden.
Before dismantling the technical unit, the water must be drained completely.



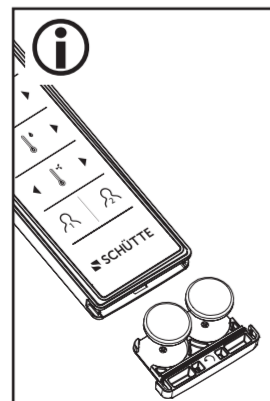
MONTAGEANLEITUNG USER MANUAL



- ❶ STOPP / STOP
- ❷ EINFÜLLÖFFNUNG ENTKALKER / INJECTION PORT FOR DESCALING AGENTS
- ❸ GERUCHSFILTER / DEODORISER
- ❹ SCHALTER FÜR DIE ENTKALKUNG / DESCALING BUTTON
- ❺ PROGRAMMAKTUALISIERUNG / PROGRAM-UPDATE
- ❻ FÖHN / DRYER
- ❼ GESÄSS DUSCHE / REARWASH
- ❽ LADY DUSCHE / LADYWASH
- ❾ NACHTLICHT / NIGHTLIGHT
- ❿ SCHNELLWAHLTASTEN / QUICK SELECTION BUTTONS

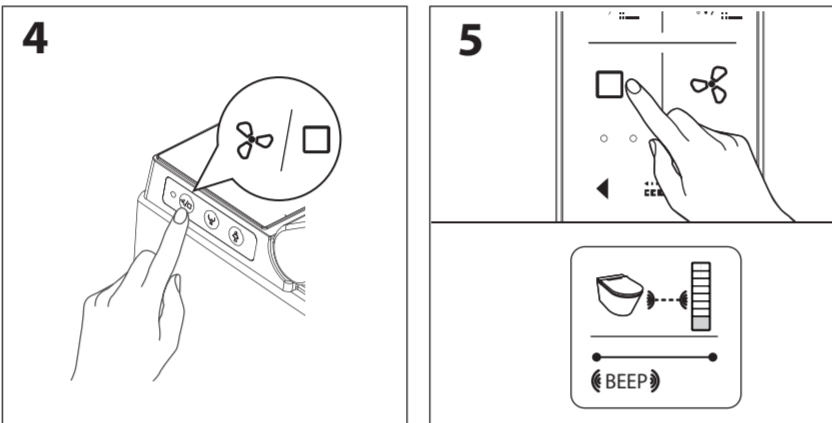
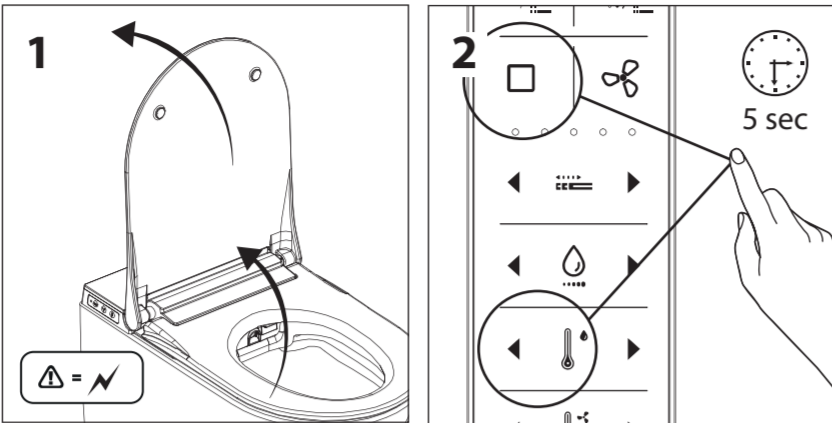


- ❶ GESÄSS DUSCHE / REARWASH
- ❷ LADY DUSCHE / LADYWASH
- ❸ STOPP / STOP
- ❹ FÖHN / DRYER
- ❺ LED ANZEIGE / LED INDICATION
- ❻ POSITION DÜSE / NOZZLE POSITION
- ❼ WASSERMENGE / FLOW RATE
- ❽ WASSERTEMPERATUR / WATER TEMPERATURE
- ❾ FÖHN-TEMPERATUR / DRYER TEMPERATURE
- ❿ BENUTZER 1 oder 2 / USER 1 or 2

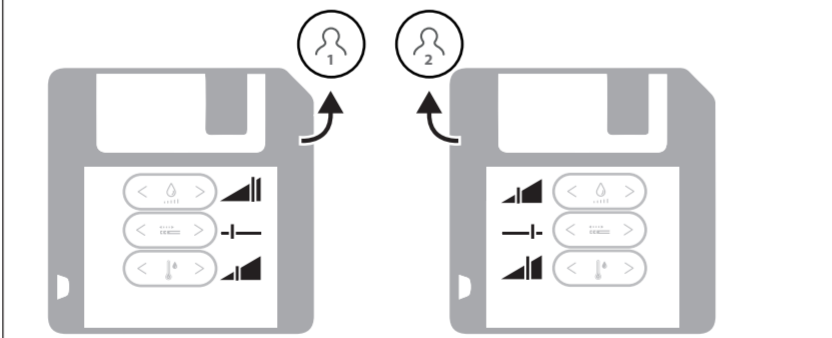
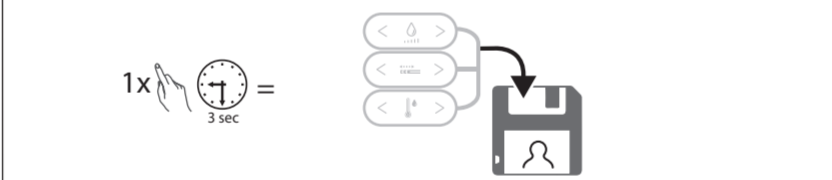


Die Fernbedienung benötigt zwei Batterien (3V CR2032).
The remote control requires two batteries (3V CR2032).

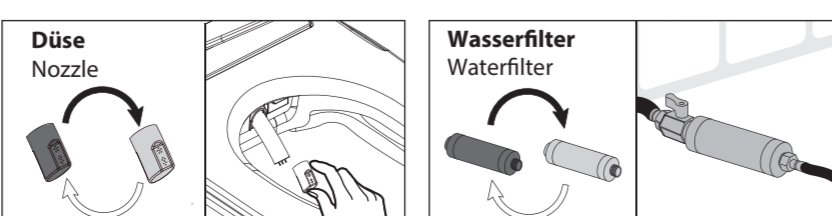
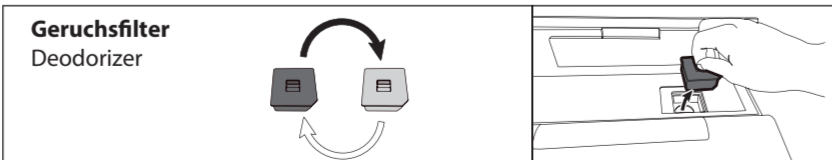
VERBINDUNG DER FERNBEDIENUNG CONNECTION REMOTE



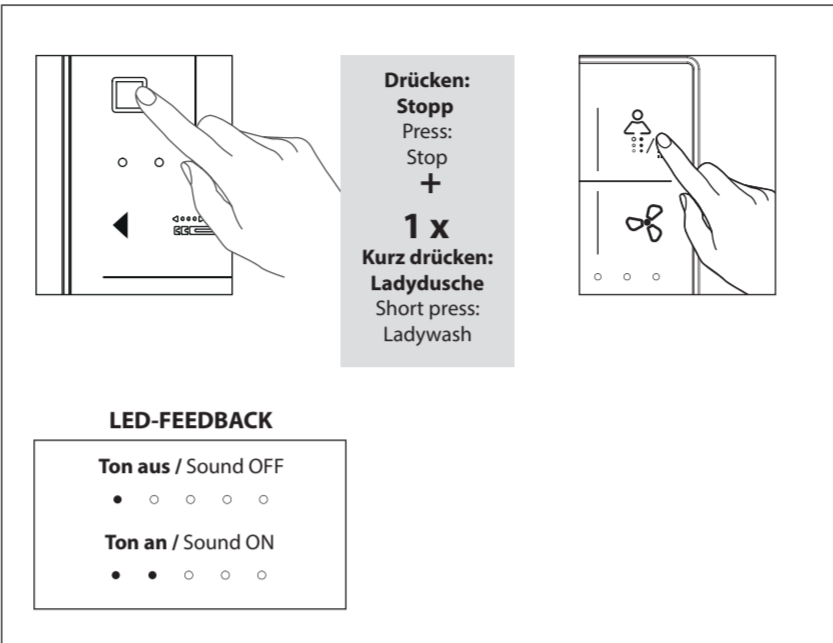
BENUTZERPROFIL USER PROFILE



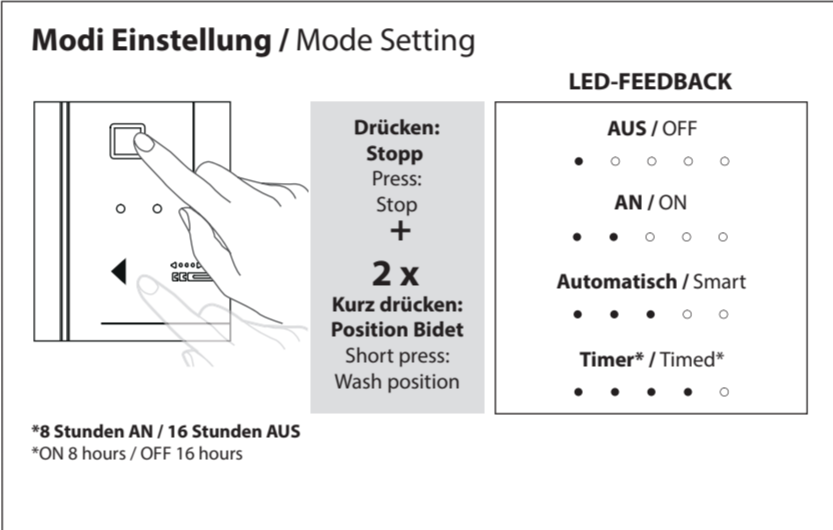
AUSTAUSCHZYKLUS REGULAR EXCHANGE



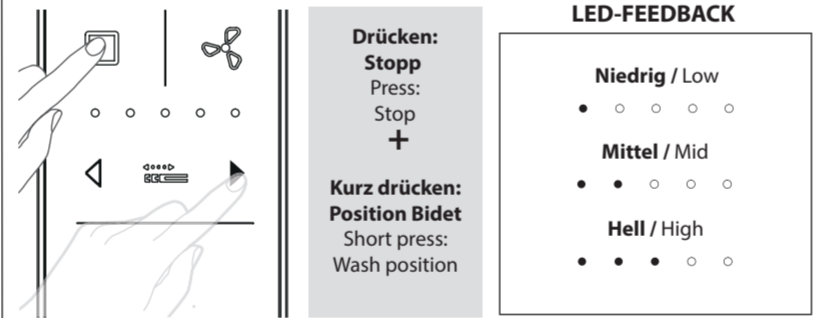
TON EINSTELLUNG SOUND SETTING



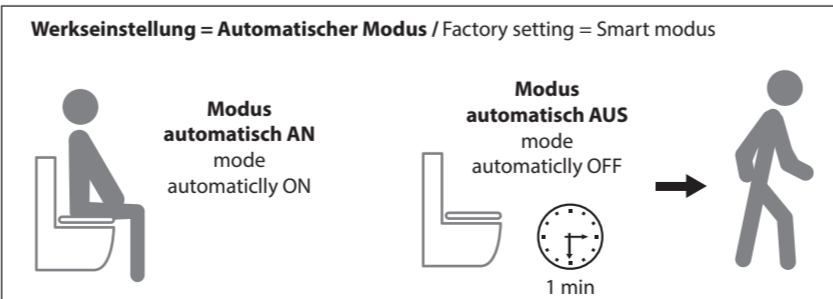
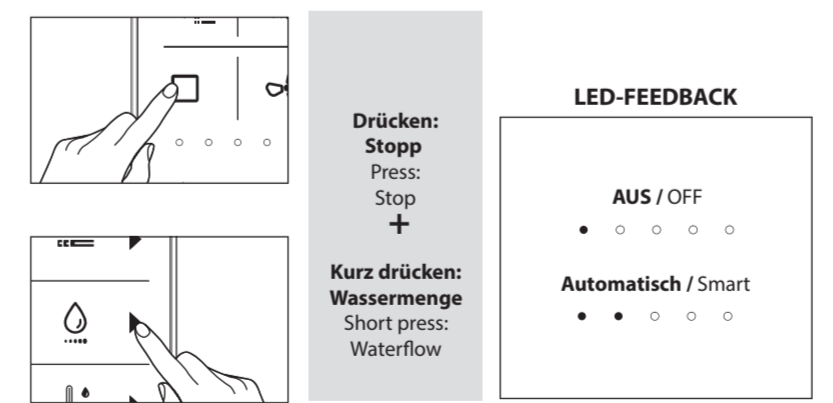
EINSTELLUNG NACHTLICHT NIGHTLIGHT SETTING



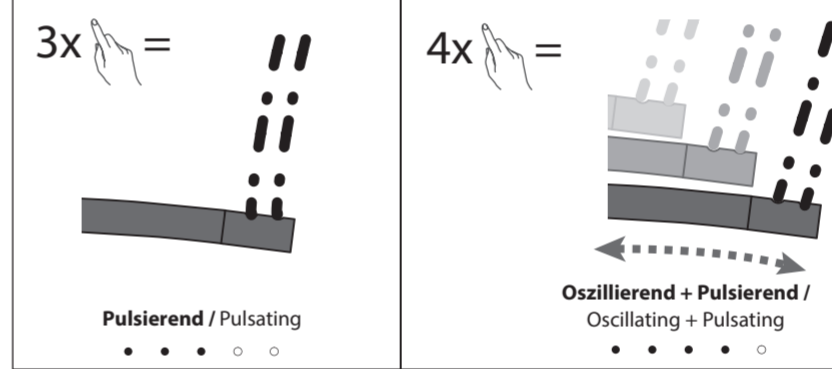
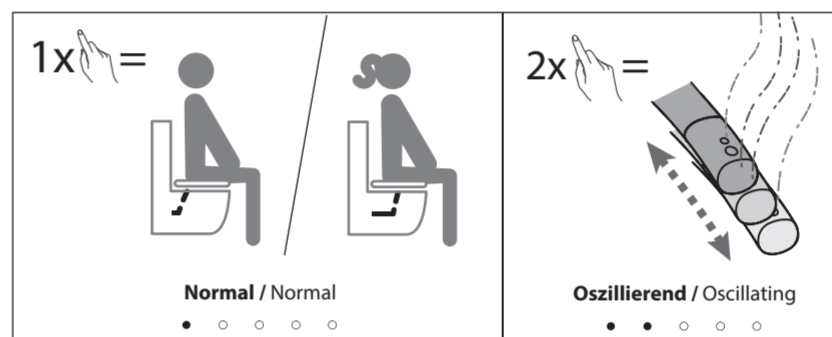
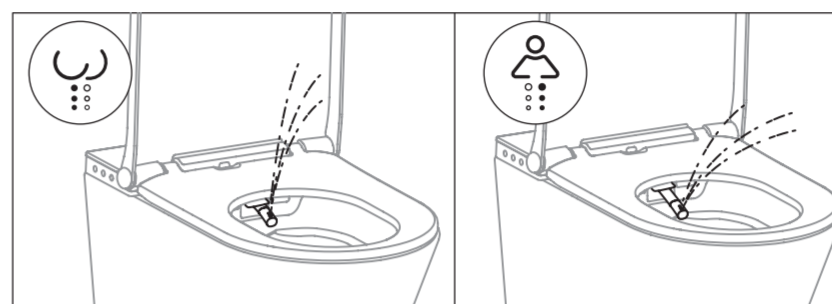
Einstellung Helligkeit / Brightness Setting



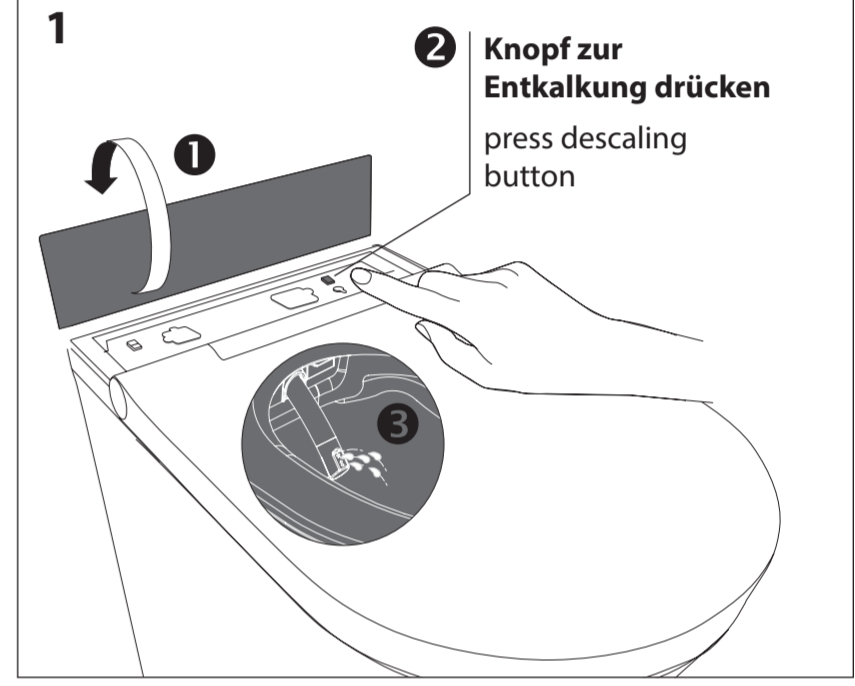
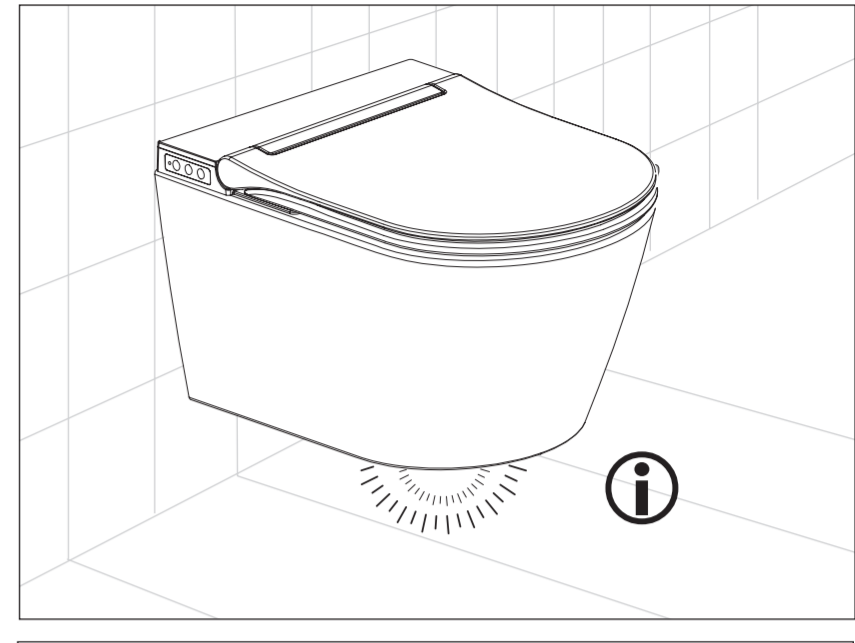
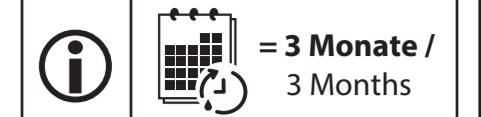
EINSTELLUNG GERUCHSABSAUGUNG DEODORIZING SETTINGS



BIDET FUNKTIONEN BIDET FUNCTIONS



ENTKALKUNG DESCALING



DÜSENREINIGUNG NOZZLE CLEANING

